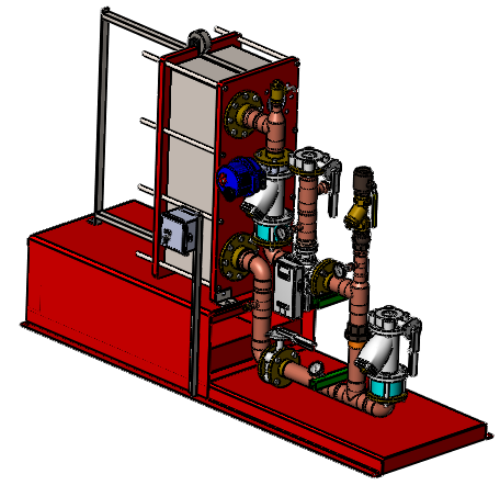


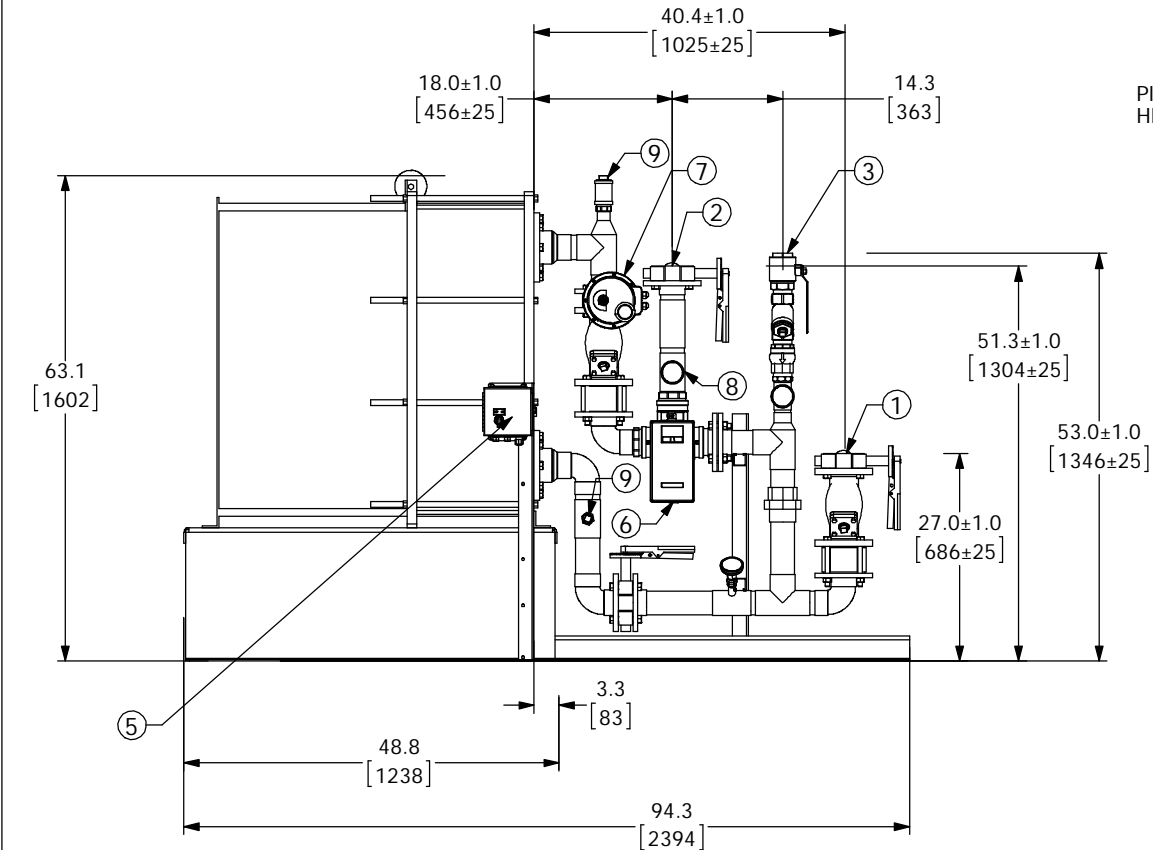
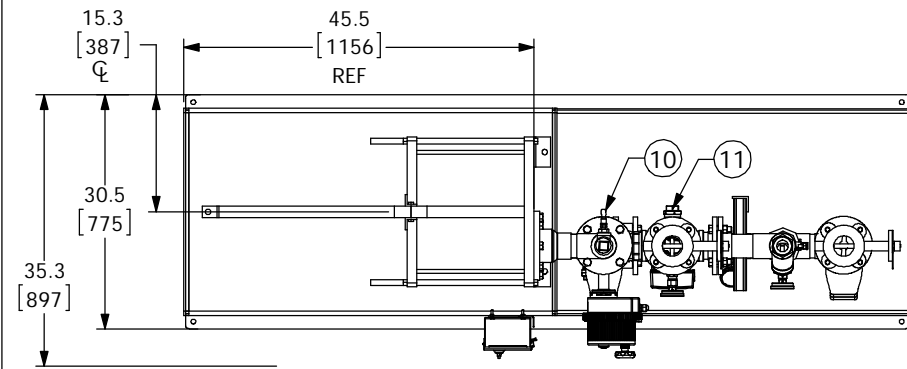
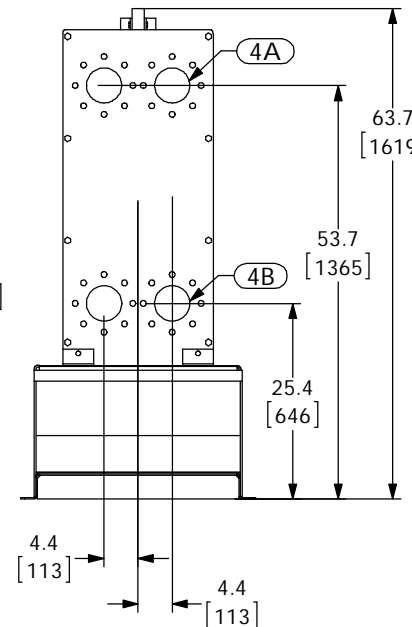
## APPROVAL

BY: \_\_\_\_\_ DATE: \_\_\_\_\_

- ☐ APPROVED, PROCEED WITH FABRICATION
- ☐ APPROVED AS NOTED, PROCEED WITH FABRICATION IN ACCORDANCE WITH COMMENTS
- ☐ DISAPPROVED, DO NOT FABRICATE



DIGITAL FLO BOILER WATER/WATER PLATE &amp; FRAME HEAT EXCHANGER DOUBLE WALL

PIPING AND COMPONENTS  
HIDDEN TO SHOW CONNECTIONS


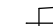
PROJECT NAME :

TAG :

ITEM	DESCRIPTION	CONNECTION
1	COLD WATER INLET	3" FLG ANSI 150
2	MIXED WATER OUTLET	3" FLG ANSI 150
3	RECIRC WATER INLET	2" NPT
4A	PRIMARY(BOILER) INLET	4" FLG ANSI 150
4B	PRIMARY(BOILER) OUTLET	4" FLG ANSI 150
5	ELECTRICAL PANEL	110VAC @ 0.7A
6	DRV80	3" NPT
7	N.C. ACTUATED BALL VALVE SAFETY SHUT OFF	3" WAFER
8	THERMOMETER (3)	
9	CIP CONNECTION (2)	1-1/2" AND 1" NPT
10	SRV(PRESSURE) PIPE TO DRAIN	1" NPT
11	SRV(CONNECTION FOR USER SUPPLIED T&P)	1-1/2" NPT
ITEM		MATERIAL
PIPING		COPPER TYPE "L"
EXCHANGER PLATE MATL.		T316L SS
EXCHANGER GASKET MATL.		NITRILE

NOTE(S):

- ALL DIMENSIONS +/- .5[13] UNLESS OTHERWISE SHOWN.
- COMPLETE ASSEMBLY LEAD FREE COMPLIANT - THE WETTED SURFACE OF THIS PRODUCT CONTACTED BY CONSUMABLE WATER CONTAINS LESS THAN ONE QUARTER OF ONE PERCENT (0.25%) OF LEAD BY WEIGHT.
- PACKAGE INCLUDES ALL REQUIRED INLET CHECK VALVES AND STRAINERS ON DOMESTIC SIDE.
- DRV, SAFETY SHUT OFF AND ELECTRICAL PANEL ARE PREWIRED TO PROVIDE A SINGLE ELECTRICAL LANDING POINT AT THE PANEL.

											
DO NOT SCALE DRAWING											
TOLERANCES UNLESS OTHERWISE SPECIFIED											
DIMENSIONING ENGLISH (mm)											
FRACTIONAL				$\pm 1/64$							
ANGULAR:				$\pm 2$							
DECIMAL				.XXX		$\pm .0005$		IN.		M	
				.XXX		$\pm .005$				.010	
				.XX		$\pm .015$				.10	
				X		-----				.3	



NAME	DATE
DRAWN CFG	02/26/2013
RELEASED SALES	

ARMSTRONG INTERNATIONAL	
Copyright © 2010 ARMSTRONG INTERNATIONAL, INC.	
DF120WDW80 3 FLG 3 FLG 2 NPT CPR	
CONFIG# (C-XXXXXX)	
MATERIAL	SHEET 1 OF 1
REV	DWG. D5XXXXX